

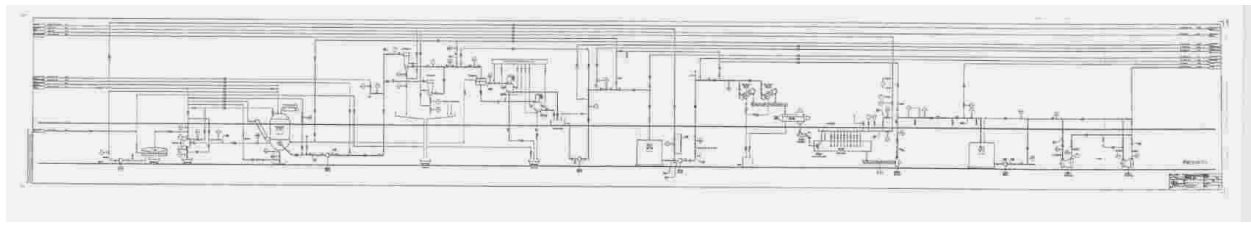
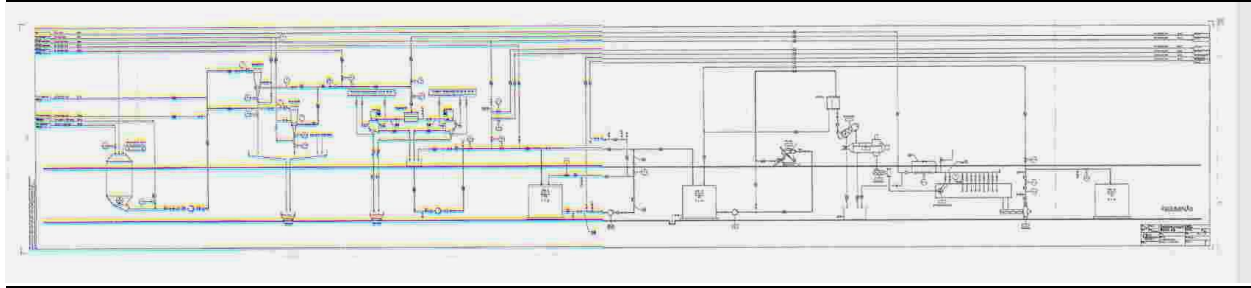
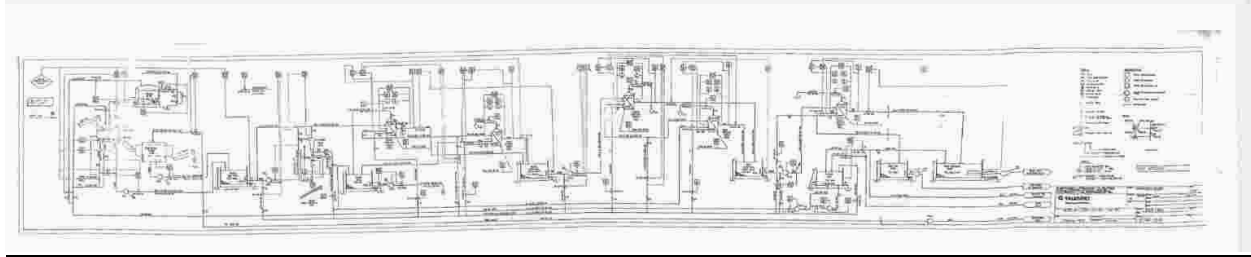
# *Acme Surplus Machinery Inc.*

Quality Surplus Machinery for Pulp & Paper

5488 White Sands Cove • Lake Worth, FL 33467 • USA  
Phone: 561.432.7768 • Fax: 561.537.8211 • Mobile: 215.801.9333  
Email: froberts@acmesurplus.com

## Acme A098322 Board Machine and Mill

BOARD MACHINE WIDTH 2800mm



Surplus Machinery Bought & Sold    Please visit our web site at <http://www.acmesurplus.com>    Liquidations • Consignments • Appraisals

*All equipment is offered subject to prior sale or disposition and written confirmation by Acme Surplus Machinery prior to acceptance of offer.  
All sales subject to Acme's terms & conditions. You may request a copy of these terms and conditions.*

Board machine, operating width 2800mm, original year of manufacture: 1957 Tampella manufacture with rebuilds in 2007. Speed minimum 160 m/min and maximum 350 m/min (normal 180 to 320 m/min) Grammage 150 to 250 gsm. Production capacity of 170 to 240 t/day (width of 2800 mm).

Rebuild of wet end press section calendar and reel up in 1973. Major modifications/new equipment: new hot press UMV 1988, 5 new pressure formers UMV in 1992 and 1994, modification of suction couch press RMG manufacture 1999, new sectional electric drive by Metso, Vacon, Honeywell in 2000, new forming section with 4 wireformers, manufacturer Markina, in 2006 and modification of first press by Metso in 2009.

The machine is a basement machine with a left hand drive. The drive has been upgraded to a sectional electric drive. The product is Plasterboard liner. Mill voltage is 380 volts, 3ph and 50 cycles. Soleplate centres are:

Wet end 3790mm

First press to size press 3500mm

Size press to last dryer 3300mm

The machine has three pulp systems, one of which takes Tetra Pak.

### **Stock Prep**

1/ Voith line with l/c pulper, waste paper conveyor inclined to a Voith pulper with standard rotor. Pulper rejects via an Esher Wyess Fiberiser. Pulp cleaned by 2 Voith HD cleaners model S2 with pneumatic timed reject valves. Two Hett separators models SP700 and SP 1000. The SP units have V belt drives. Production is 120 t/day.

2/ Tampella line with l/c pulper fed from a waste paper inclined conveyor. One Voith HD cleaner S2 with pneumatic timed valves. Stock cleaned by two Hett SP 700 separators with V belt drives. Production is 120 t/day.

Rejects are screw fed to a hopper for collection by truck.

### **Rejects pulper**

Cellwood pulper for rejects with side entry agitator. New rotor fitted 2005. Pulper tub Beloit Shark design.

Pulp passes through a Voith HD cleaner S2 and pulp then passes over a DSM screen. Production 2 t/hr.

**Acme Surplus Machinery Inc**

A098322 Board Machine and Mill

Page 2

In same area is a foundation for a JCOO refiner which is currently located in the workshop.

3/ Black Clawson pulper with bottom rotor 42” and also a top B rotor, consistency 15 to 18%. Reject to a stainless steel Valmet Trommel year 1997. Production 150 t/day.

Stainless fine screening chest with a side entry agitator.

Stainless steel HD type cleaner for cleaning white water.

Voith HD S2 cleaner with pneumatic dump valves.

### **Screening system**

Valmet coarse screen model 100 with 2.4 mm holes.

Valmet coarse screen secondary model DA50 with 2.4mm holes.

Valmet fine screen model DA200 with 0.25mm slotted basket.

Valmet secondary screen model DAS 50 with 0.25mm slots.

Valmet fractionator model BAF with 0.11mm slots.

Rejects tank stainless.

Two sand filters for seal water for pump mechanical seals.

Four stainless inclined Sidehill screens for pulp thickening and fractionating. Slot size is 0.5mm.

Hot water stainless tank for pulper water.

### **Dispersion system 1**

Krima dispersion system for production of 150 t/day with two pre thickening inclined presses.

One screw press horizontal.

Heated screw press.

Feed screw feeder.

Krima 710 Dispensor unit, year of manufacture 1989.

### **Dispersion system 2**

Krima dispersion system for production of 60 t/day. One pre thickening inclined press.

One screw press horizontal.

Heated screw press.

**Acme Surplus Machinery Inc**

A098322 Board Machine and Mill

Page 3

Feed screw feeder.

Krima 710 Dispensor unit, year of manufacture 1985.

### **Rejectsorter**

Esher Wyess reject sorter with a screw press thickening of the rejects.

### **Refining**

One Pilao Tridisc model 24”.

Bedplate for trial JCO-3 to be returned to Metso as it was unused.

### **Pressure screens for formers**

Four BCI Tampella model 24P pressure screens, C.I. bodies and converted to V.Belt drives. Two blade rotors.

Baskets are 0.25mm and with four blade rotors.

Total of six Nash CL 3002 vacuum pumps. One unit is a copy by Katachi Indian manufacturer. One spare Nash CL 3002 pump beside the roll store.

Stock chests are concrete manufacture and most stock pumps are Egger manufacture.

### **Rejects screen**

Black Clawson 12 PB pressure screen with holes 1.5mm not in use.

Vibrating screen for top wire rejects

G. L. & V. disc filter with 14 discs. Stainless steel vat with a pneumatic lifting front cover (used for fibre thickening).

Stainless steel stock chest.

### **Board machine**

Four formers, year 2007 manufacture in stainless steel. Markinaa manufacture, stainless wire covers former roll, Tampella suction roll on top felt board return.

First press suction press with pneumatic loading.

Tampella under machine pulper. Edge trimmer.

Second press suction bottom roll pneumatic loaded.

**Acme Surplus Machinery Inc**

A098322 Board Machine and Mill

Page 4

Double nip high load press by G. L. & V with hydraulic loading.

Tail feeding by Metso air feed, also sheath rope feed.

First dryer section with oscillating doctors. Manual felt tensioning, auto felt guides, a/f bearing with central lub system, dryers with fixed siphons, open type hood with front sliding doors. Dryers are in six sections: drives are sectional electric drives, open C.I. gear wheels, total of 42 dryers operating at 4.5 bar steam pressure, diameter 1500mm. The dryers have three felt tension indicators in the system. Before last cylinder section of 12 dryers (four cooling cylinders after the size press) is a size press by UMV.

At the dryers, before the size press and prior to entering the size press, the sheet is measured for moisture by a Measurex cross machine scanner.

After the last 12 dryers is a two roll calender and a Measurex 2002 cross machine scanner measuring profile, gsm, moisture, thickness and temperature.

Unit for feeding tapes into sheet for reel changes. Drum reel up for 2000 mm diameter finished rolls.

Machine has a total of 21 ABB sectional electric drives and gearboxes.

Machine house cranes: one over the wet end, one over the dryers and one double unit 4 ton at the horizontal reel up.

The machine laboratory has an all-in-one paper testing lab.

### **Rewinder**

Jagenberg Vari-Dur width 2800mm, rewind diameter 2100mm, unwind for the machine tambours, three water cooled drum brakes, side engaging chuck into reel sheels for braking and tension control. Brakes and rewinder drives are on r/hand of the rewinder. Tension control, 5 top slitters with manual adjustment. Bottom knife pneumatic loaded, rewinder has new drive fitted: two motors 132 kw each driving two drums. Rewind is shaftless.

### **Salvage rewinder**

Jagenberg Vari-Dur rewinder 2100mm width .This machine is slitting coils for core board down to 48mm widths: 17 slitters fitted, shaftless floor pick up stands with lateral movement and hydraulic roll lift table, Wichata water cooled disc brakes, drive l/hand from rear of the machine, tension control, roll diameter 1500mm, shaft rewind with various sized shafts. Drive is DC 62 kw.

Manual operated core cutter

**Acme Surplus Machinery Inc**

A098322 Board Machine and Mill

Page 5

### **Roll wrapper**

Buma roll wrapper, paper wrap with one roll magazine for wrap rolls. Roll diameter 2100mm maximum, floor ground conveyor from machine in house crane to roll turner and roll wrap.

### **Final sludge treatment**

Meri Elephant screen for pre thickening, secondary thickening by a Thune/Voith SP 23 screw press in stainless steel. Thickened sludge approx 40% BD transferred by screw conveyor to outside skip.

### **Reject screen OTM**

In store is an Octopus across machine profiler.

Almost new de-wiring unit for paper/pulp bales and designed for a production of 150 t/day.

### **General Items**

In the building beside settlement tanks a Hydra step screen for final removal of solids approx 0.5 mm width. Final water treatment is by settlement in an open ground tank. Mill has a large area in the tank so natural settlement occurs without the use of polymers and the tank has a long retention time before water then flows to the local sewage treatment plant.

### **Mill general stores.**

Mill engineering shop with shaper, lathe, steel bender, hydraulic lifting table, overhead crane, and bandsaw.

### **Electrical stores.**

### **Boiler**

B&W Boiler using wood and plastic waste material on site. Rated at 14 MW at 13.8 MJ/kg  
Pressure 16 bars at 201 deg C, steam production 22 t/hour, year 2007.

## Laboratory

Lorenzen and Wettre automatic paper laboratory model Autoline 300 , year 2007, measuring tear, tensile, burst, profile, formation, moisture, thickness, porosity, gsm and smoothness.

In room is an air conditioning unit and strip cutting unit for sample strip to be tested.

## Main Laboratories

Bensten Smoothness and Porosity tester

L&W Densometer

Micrometer

Humidity tester in white metal body with glass covers

LRW tensile tester

Small electric balance

Coefficient of friction tester

Two cob testers

FN 400 oven

Mainimer oven

Paper guillotine

Scott internal bond tester

L&W tensile tester

Laboratory beater

**Acme Surplus Machinery Inc**

A098322 Board Machine and Mill

Page 7

Air conditioning unit

Hydraulic press for water removal

Standard sheet maker

Pulp disintegrator

Sheet rotary dryer with carrier felt and is with electrical heating

Sheet maker

Shopper Reigler tester

Herius Oven

Butchi water still

Herius Oven

Pan balance

Microscope

PH tetser